

LABELS & PACKAGES

REM 430

ILLUSTRATED BY: Dan Deacon

A TEACHING RESOURCE FROM



©2014, 2010, 1995

**Copyright by Remedia Publications, Inc.
All Rights Reserved. Printed in the U.S.A.**

The purchase of this product entitles the individual teacher to reproduce copies for classroom use.
The reproduction of any part for an entire school or school system is strictly prohibited.

To find Remedia products in a store near you, visit:
www.rempub.com/stores

REMEDIA PUBLICATIONS, INC.
15887 N. 76TH STREET • SUITE 120 • SCOTTSDALE, AZ • 85260



This product utilizes innovative strategies and proven methods to improve student learning. The product is based upon reliable research and effective practices that have been replicated in classrooms across the United States. Information regarding the Common Core State Standards this product meets is available at www.rempub.com/standards

Name _____



1. Is this soup ready to eat, or do you have to add water? _____

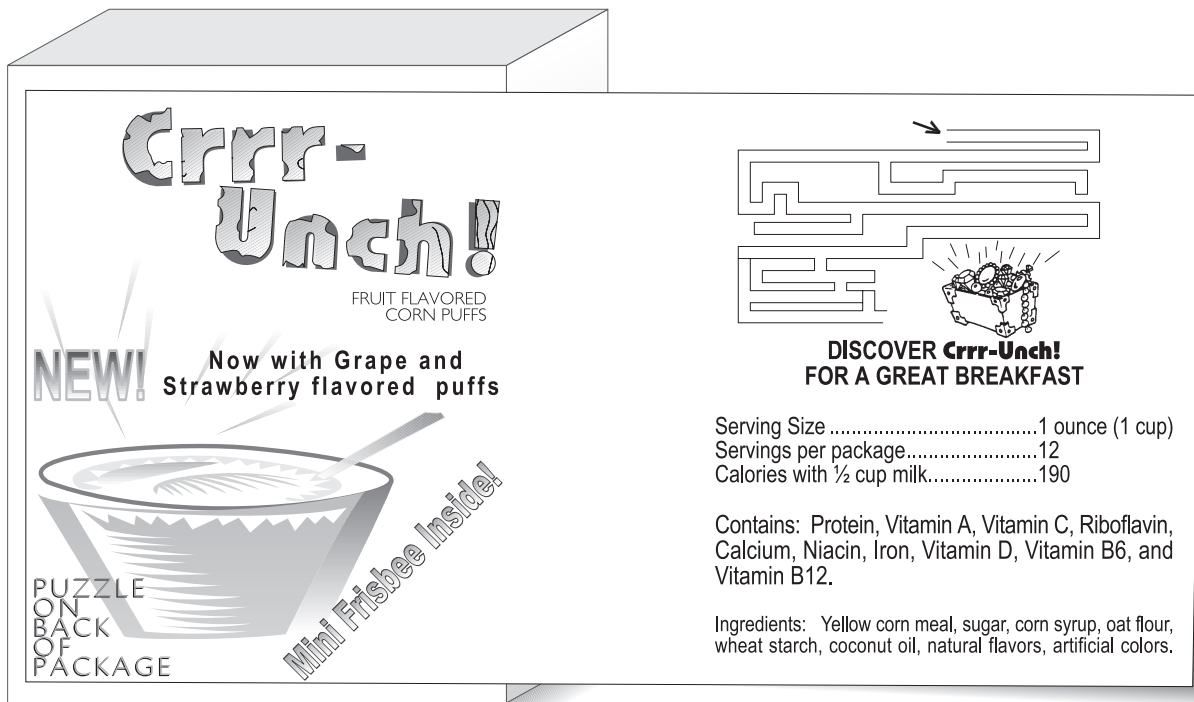
2. How many calories are in one serving? _____
3. If you and a friend each had one serving of soup, how many servings would be left?

4. What should you do with the leftovers? _____

5. Name two ingredients found in this product. _____
6. If there is something wrong with the product, what will the company do? _____

7. Where should you write to complain? _____

Name _____



1. What's new about this cereal? _____
2. What is the prize inside the package? _____
3. How much cereal makes up one serving? _____
4. How many calories are in a serving with milk? _____
5. List three vitamins this cereal contains. _____
6. List three ingredients in this cereal. _____

7. If two people each had one serving, how many servings would be left? _____
8. Follow the maze to the treasure chest.

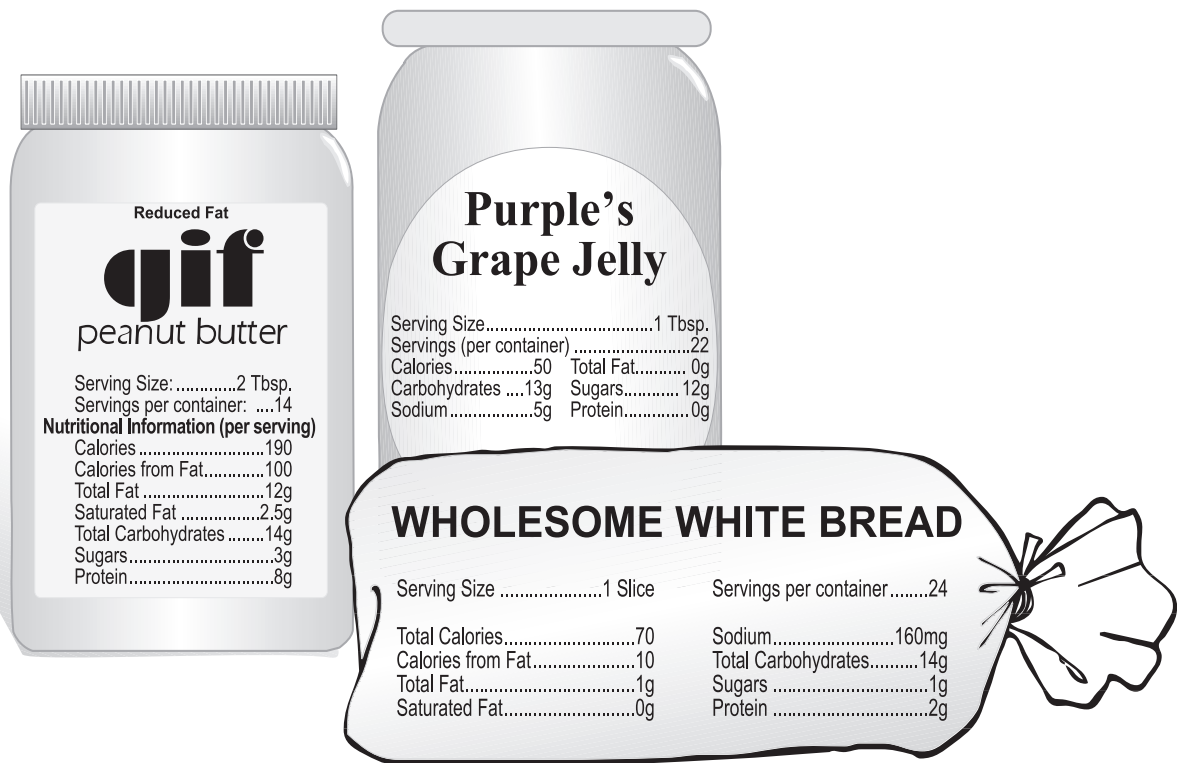
Name _____



1. What is the name of this product? _____
2. How much money will you save off the marked price? _____
3. For what type of hair is this product recommended? _____
4. How many ounces are in the bottle? _____
5. To use it, what do you do first? _____
6. How often can this shampoo be used? _____
7. What company makes this product? _____
8. What should you do if shampoo gets in your eyes? _____

9. If you use this product, what do they claim your hair will be? _____

Name _____



1. Which ingredient in a PB & J sandwich (using 2 slices of bread) has the most sugar?

2. Using this recipe for a PB & J sandwich: 2 Tbsp. peanut butter, 1 Tbsp. grape jelly and two slices of bread, how many sandwiches could you make from the ingredients pictured above? _____
3. How many calories are in one PB & J sandwich (using recipe above)? _____
4. How many total grams of fat are in one PB & J sandwich? _____
5. How many grams of saturated fat? _____
6. How much protein do you get from one sandwich? _____
7. How could you make a PB & J sandwich with fewer calories and less fat? _____

Name _____



1. If you get this product all over your hands, what should you use to clean them?

2. If you are gluing a valentine onto a piece of paper, how much glue should you use?

3. Name two things that can be repaired with this glue. _____

4. After gluing something that is wooden, how long should you wait before using?

5. Who makes this product? _____
6. Where is it made? _____
7. Why do you think it should be reclosed and stored upright after using? _____
